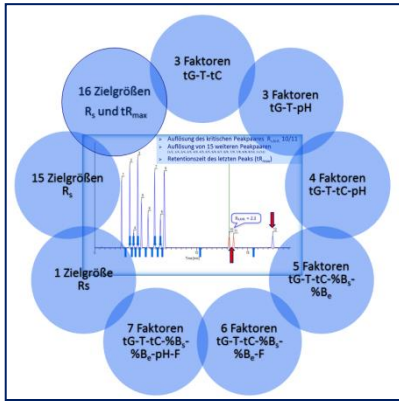
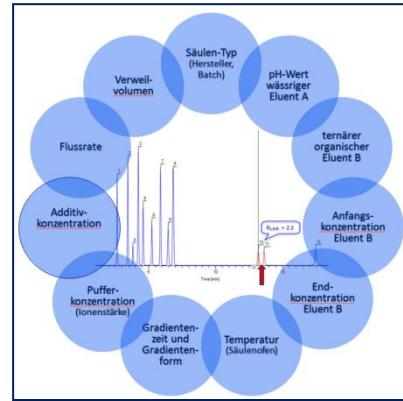


# Analytical Quality by Design - Effizient Arbeiten im HPLC-Labor

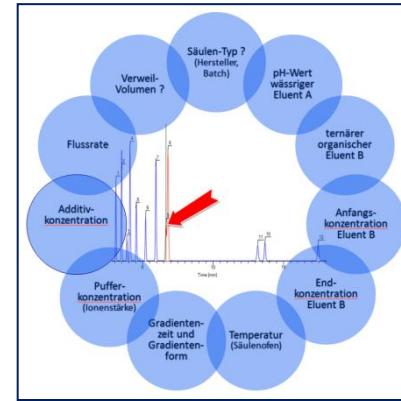
Globale Optimums einer HPLC-Trennung



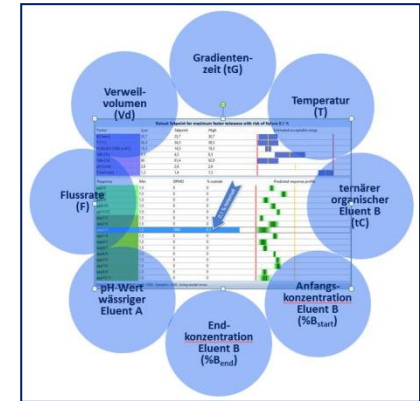
Robuster Arbeitspunkt einer HPLC-Trennung



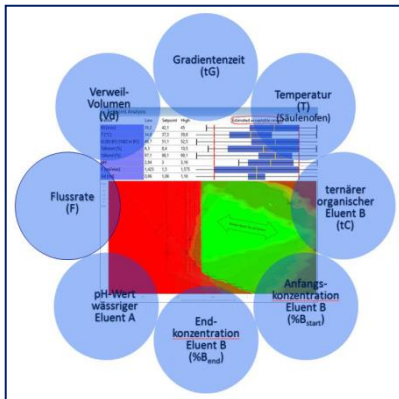
Optimierung einer anfälligen HPLC-Methode



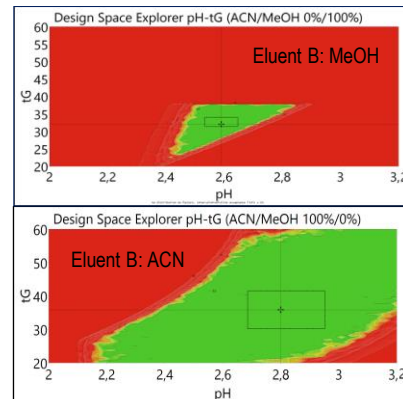
Test einer HPLC-Methode auf Robustheit



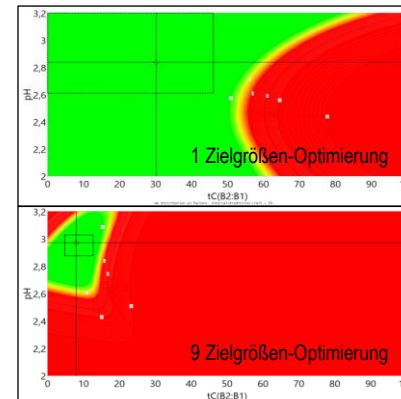
Robuste Faktorbereiche und Visualisierung des Design Space



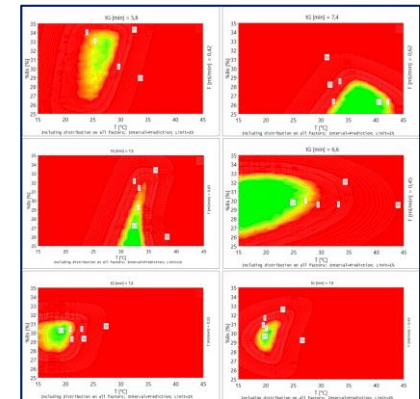
„Grüne“ HPLC – Strategie der nachhaltigen Trennungsoptimierung



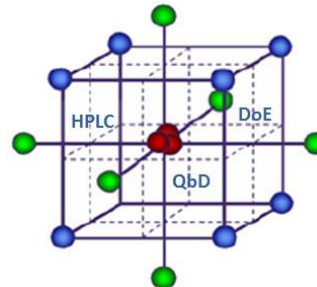
Multi-Faktoren-Modell und Multi-Zielgrößen-Modell



Vergleich von RP-Phasen



Dr. Hans-Werner Bilke  
Am Lutzfeld 9  
D-83098 Brannenburg am Inn  
Consultancy, Analysis & Training,  
Email [h.bilke@hplcanalytik.de](mailto:h.bilke@hplcanalytik.de)  
Mobil: +49 (0) 1525/3809608  
Tel: +49 (0) 8034/6079305



- HPLC Method Development
- HPLC Method Optimization
- HPLC Robustness Test
- Quality by Design
- Design of Experiments
- Training and Consulting